

## **Dongguan Baochenghui electronic technology** **Co., LTD**

### **FCC** FCC REPORT

Prepared For :	Dongguan Baochenghui electronic technology Co., LTD Room 602, Building 3, No.4 West First Street, Wusha Xingfa South Road, Chang 'an Town, Dongguan City, Guangdong Province, China
Product Name:	magnetic wireless power bank
Trade Name:	N/A
Model :	F19P, F18, F18S, F19, F19S, F20, F20S, F21, F21S, F22, F22S, F23, F23S
Prepared By :	Rhenish-Lab Certification & Testing (Shenzhen) Co., Ltd. 101, Building B, Bailu Plaza, No. 48, Gonghe Industrial Road, Gongle Community, Xixiang Street, Baoan District, Shenzhen, Guangdong, China
Test Date:	May 14, 2024 to May 16, 2024
Date of Report :	May 17, 2024
Report No.:	RLT2405038-03

## TABLE OF CONTENTS

<b>TEST REPORT DECLARATION .....</b>	<b>3</b>
<b>GENERAL INFORMATION .....</b>	<b>4</b>
1.1. Report information .....	4
1.2. Test Facility .....	4
1.3. Test Uncertainty .....	4
<b>2. PRODUCT DESCRIPTION .....</b>	<b>5</b>
2.1. EUT Description .....	5
2.2. Test Conditions .....	5
<b>3. TEST RESULTS SUMMARY .....</b>	<b>6</b>
<b>4. TEST EQUIPMENT USED .....</b>	<b>7</b>
4.1. For Conducted Emission Test .....	7
4.2. For Radiated Emission Measurement .....	7
<b>5. CONDUCTED EMISSION TEST .....</b>	<b>8</b>
5.1. Block Diagram of Test Setup .....	8
5.2. Test Standard .....	8
5.3. Conducted Emission Limit(Class B) .....	8
5.4. EUT Configuration on Test .....	8
5.5. Operating Condition of EUT .....	9
5.6. Test Procedure .....	9
5.7. Test Result .....	9
<b>6. RADIATED EMISSION MEASUREMENT .....</b>	<b>9</b>
6.1. Block Diagram of EUT Configuration .....	9
6.2. Test Standard .....	10
6.3. Radiated Emission Limit(Class B) .....	10
6.4. EUT Configuration on Test .....	10
6.5. Operating Condition of EUT .....	10
6.6. Test Procedure .....	11
6.7. Test Result .....	11
<b>APPENDIX I .....</b>	<b>12</b>
N/A .....	12
<b>APPENDIX II .....</b>	<b>13</b>
<b>APPENDIX III .....</b>	<b>16</b>
<b>APPENDIX IV .....</b>	<b>18</b>

**TEST REPORT DECLARATION**

Applicant	:	Dongguan Baochenghui electronic technology Co., LTD
Address	:	Room 602, Building 3, No.4 West First Street, Wusha Xingfa South Road,
EUT Description	:	magnetic wireless power bank
Model Number	:	F19P, F18, F18S, F19, F19S, F20, F20S, F21, F21S, F22, F22S, F23, F23S (Note: All models are identical except for model numbers, all tests were tested on model F19P )
Ratings	:	DC 5.0V

Test Standards:

**FCC Part 15:2016**

The EUT described above is tested by US to determine the maximum emission levels emanating from the EUT, the maximum emission levels are compared to the FCC Part 15 limits. The measurement results are contained in this test report. and BST Testing (Shenzhen) Co., Ltd. is assumed of full responsibility for the accuracy and completeness of these measurements. Also, this report shows that the EUT is to be technically compliant with the FCC requirements. This report applies to above tested sample only and shall not be reproduced in part without written approval of BST Testing (Shenzhen) Co., Ltd.

Prepared by :

huay Jiang

Assistant

Reviewer :

Cindy yang

Supervisor

Approved &amp; Authorized Signer :



Manager

## GENERAL INFORMATION

### 1.1. Report information

- 1.1.1. This report is not a certificate of quality; it only applies to the sample of the specific product/equipment given at the time of its testing. The results are not used to indicate or imply that they are application to the similar items. In addition, such results must not be used to indicate or imply that RLT approves recommends or endorses the manufacture, supplier or use of such product/equipment, or that RLT in any way guarantees the later performance of the product/equipment.
- 1.1.2. The sample/s mentioned in this report is/are supplied by Applicant, RLT therefore assumes no responsibility for the accuracy of information on the brand name, model number, origin of manufacture or any information supplied.
- 1.1.3. Additional copies of the report are available to the Applicant at an additional fee. No third part can obtain a copy of this report through RLT, unless the applicant has authorized RLT in writing to do so.

### 1.2. Test Facility

The test site used to collect the data is located on the address of  
BSL Testing Co.,LTD.

(FCC Registered Test Site Number: 191509) on

NO. 24, ZH Park, Nantou, Shenzhen, 518000 China

The Test Site is constructed and calibrated to meet the FCC requirements.

### 1.3. Test Uncertainty

(95% confidence levels,  $k=2$ )

Test Item	Uncertainty
Uncertainty for Conduction emission test	2.2dB
Uncertainty for Radiation emission test (30MHz to 1GHz)	4.0dB

## 2. PRODUCT DESCRIPTION

### 2.1.EUT Description

Description	:	magnetic wireless power bank
Applicant	:	Dongguan Baochenghui electronic technology Co., LTD Room 602, Building 3, No.4 West First Street, Wusha Xingfa South Road, Chang 'an Town, Dongguan City, Guangdong Province, China
Manufacturer	:	Dongguan Baochenghui electronic technology Co., LTD Room 602, Building 3, No.4 West First Street, Wusha Xingfa South Road, Chang 'an Town, Dongguan City, Guangdong Province, China
Model Number	:	F19P, F18, F18S, F19, F19S, F20, F20S, F21, F21S, F22, F22S, F23, F23S (Note: All models are identical except for model numbers, all tests were tested on model F19P )

### 2.2.Test Conditions

Temperature: 23~25°C

Relative Humidity: 55~63 %

3. TEST RESULTS SUMMARY

Table 1 Test Results Summary

Test Items	Test Results
Conducted disturbance	N/A
Radiated disturbance	Pass

Remark: “N/A” means “Not applicable.”

## 4. TEST EQUIPMENT USED

### 4.1. For Conducted Emission Test

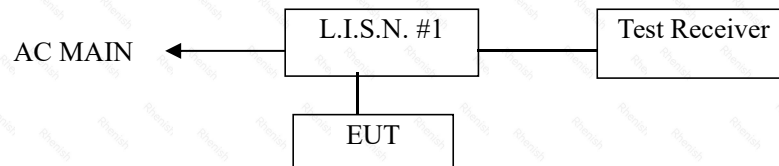
Item	Equipment	Manufacturer	Model No.	Serial No.	Calibrated until	Cal. Interval
1.	Test Receiver	Rohde & Schwarz	ESHS30	828985/018	Oct. 08, 24	1 Year
2.	Pulse Limiter	Rohde & Schwarz	ESH3-Z2	100006	Oct. 08, 24	1 Year
3.	L.I.S.N.	Rohde & Schwarz	ESH2-Z5	834549/005	Oct. 08, 24	1 Year
4.	Conical	Emtek	N/A	N/A	N/A	N/A
5.	Voltage Probe	Schwarzbeck	TK9416	N/A	Oct. 08, 24	1 Year
6.	Coaxial Switch	Anritsu	MP59B	6100214550	Oct. 08, 24	1 Year

### 4.2. For Radiated Emission Measurement

Item	Equipment	Manufacturer	Model No.	Serial No.	Calibrated until	Cal. Interval
1.	Spectrum Analyzer	ANRITSU	MS2661C	6200140915	Oct. 08, 24	1 Year
2.	Test Receiver	Rohde&Schwarz	ESC830	828982/018	Oct. 08, 24	1 Year
3.	Bilog Antenna	Schwarzbeck	VULB9163	142	Oct. 08, 24	1 Year
4.	50 Coaxial Switch	Anritsu Corp	MP59B	6100237248	Oct. 08, 24	1 Year
5.	Cable	Schwarzbeck	AK9513	ACRX1	Oct. 08, 24	1 Year
6.	Cable	Rosenberger	N/A	FR2RX2	Oct. 08, 24	1 Year
7.	Cable	Schwarzbeck	AK9513	CRRX2	Oct. 08, 24	1 Year
8.	Cable	Schwarzbeck	AK9513	CRRX2	Oct. 08, 24	1 Year
9.	Single Phase Power Line Filter	MPE	23332C	N/A	Oct. 08, 24	1 Year
10.	Single Phase Power Line Filter	MPE	23333C	N/A	Oct. 08, 24	1 Year
11.	Signal Generator	HP	864A	3625U00573	Oct. 08, 24	1 Year

## 5. CONDUCTED EMISSION TEST

### 5.1. Block Diagram of Test Setup



(EUT: LED lamp)

### 5.2. Test Standard

FCC Part 15: 2016

### 5.3. Conducted Emission Limit(Class B)

Frequency MHz	Limits dB(μV)	
	Quasi-peak Level	Average Level
0.15 ~ 0.50	66 ~ 56*	56 ~ 46*
0.50 ~ 5.00	56	46
5.00 ~ 30.00	60	50

Notes: 1. \*Decreasing linearly with logarithm of frequency.

### 5.4. EUT Configuration on Test

The following equipments are installed on conducted emission test to meet Part 15 requirement and operating in a manner, which tends to maximize its emission characteristics in a normal application.

#### 5.4.1. EUT Information

Model Number : F19P

Serial Number : F18, F18S, F19, F19S, F20, F20S, F21, F21S, F22, F22S, F23, F23S



## 5.5. Operating Condition of EUT

5.5.1. Setup the EUT and simulators as shown in Section 5.1.

5.5.2. Turn on the power of all equipments.

5.5.3. Let the EUT work in test modes (On) and test it.

## 5.6. Test Procedure

The EUT is put on a table of non-conducting material that is 80cm high. The vertical conducting wall of shielding is located 40cm to the rear of the EUT. The power line of the EUT is connected to the AC mains through a Artificial Mains Network (A.M.N.). A EMI test receiver is used to test the emissions form both sides of AC line. The bandwidth of EMI test receiver is set at 9kHz.

The bandwidth of the test receiver is set at 9kHz. and all the scanning waveform are attached within **Appendix I**.

## 5.7. Test Result

N/A

# 6. RADIATED EMISSION MEASUREMENT

## 6.1. Block Diagram of EUT Configuration

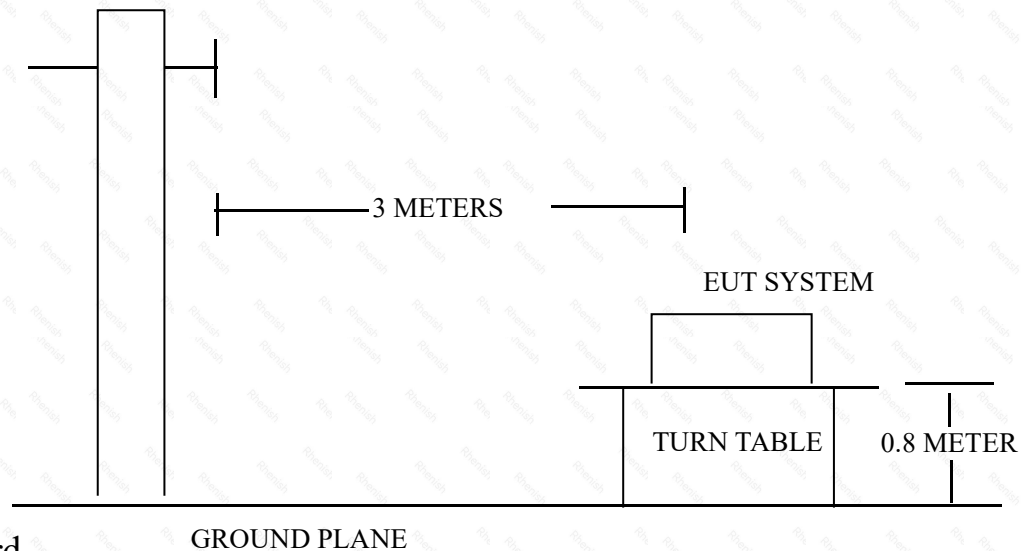
6.1.1. Block Diagram of connection between the EUT and the simulators



*(EUT: LED lamp)*

## 6.1.2.Semi-Anechoic Chamber Test Setup Diagram

### ANTENNA TOWER



## 6.2.Test Standard

FCC Part 15: 2016

## 6.3.Radiated Emission Limit(Class B)

FREQUENCY (MHz)	DISTANCE (Meters)	FIELD STRENGTHS LIMITS (dB $\mu$ V/m)
30 ~ 88	3	40.0
88 ~ 216	3	43.5
216 ~ 960	3	46.0
960 ~ 1000	3	54.0

Note:(1) The smaller limit shall apply at the edge between two frequency bands.

(2) Distance refers to the distance in meters between the measuring instrument antenna and the closed point of any part of the EUT or system.

## 6.4.EUT Configuration on Test

The following equipment are installed on Radiated Emission Measurement to meet the Commission requirements and operating regulations in a manner which tends to maximize Its emission characteristics in normal application.

## 6.5.Operating Condition of EUT

6.5.1.Setup the EUT as shown on Section 6.1.2

6.5.2.Turn on the power of all equipments.

6.5.3.Let the EUT work in test mode(On) and measure it.

## 6.6. Test Procedure

The EUT is placed on a turn table which is 0.8 meter above ground. The turn table can rotate 360 degrees to determine the position of the maximum emission level. The EUT is set 3 meters away from the receiving antenna which is mounted on a antenna tower. The antenna can move up and down between 1 to 4 meters to find out the maximum emission level. Broadband antenna (calibrated by dipole antenna) are used as a receiving antenna. Both horizontal and vertical polarization of the antenna are set on measurement.

The bandwidth setting on the test receiver is 120 KHz.

The EUT is tested in Semi-Anechoic Chamber. The frequency range from 30MHz to 1000 MHz is checked. All the test results are listed in Section 6.7. and all the scanning waveform are attached within **Appendix II**.

## 6.7. Test Result

**PASS**

APPENDIX I

N/A

APPENDIX II

## Horizontal



Site LAB

Limit: FCC Part15 B

EUT:

M/N:

Mode:

Note:

Polarization: **Horizontal**

Power:

Distance: 3m

Temperature:

Humidity: %

No.	Mk.	Freq. MHz	Reading Level dBuV	Correct Factor dB	Measure- ment dBuV/m	Limit dB/m	Over dB	Antenna Height cm	Table Degree degree	Comment
1		67.2022	35.01	-12.85	22.16	40.00	-17.84	peak		
2		166.0680	32.28	-10.81	21.47	43.50	-22.03	peak		
3		238.3102	45.13	-11.94	33.19	46.00	-12.81	peak		
4	*	266.6089	46.49	-11.39	35.10	46.00	-10.90	peak		
5		364.2595	43.76	-9.42	34.34	46.00	-11.66	peak		
6		833.3171	31.80	0.72	32.52	46.00	-13.48	peak		

## Vertica



Site LAB

Limit: FCC Part15 B

EUT:

M/N:

Mode:

Note:

Polarization: **Vertical**

Power:

Distance: 3m

Temperature:

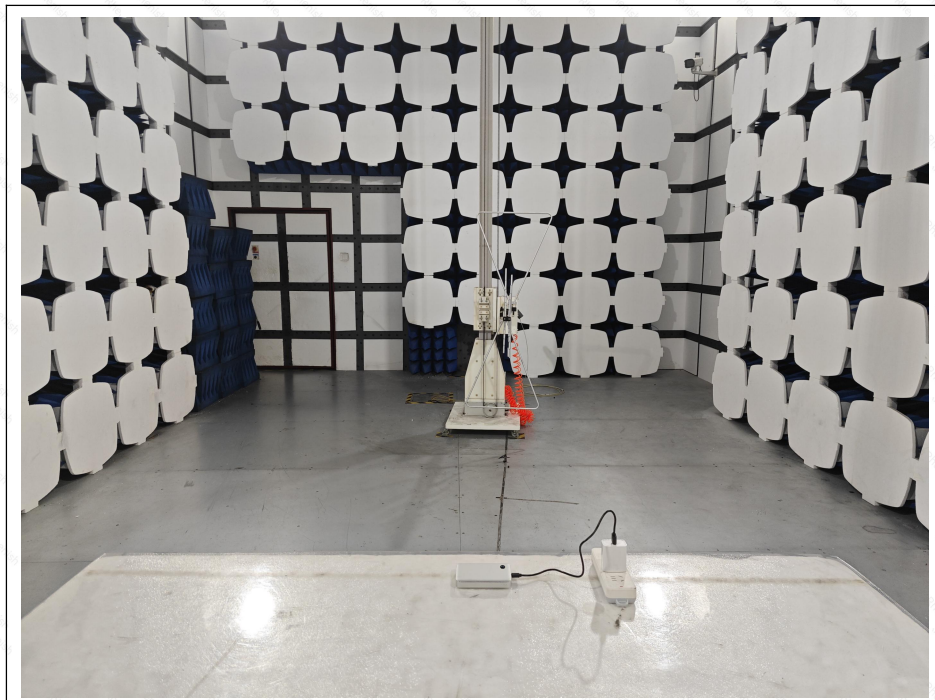
Humidity: %

No.	Mk.	Freq.	Reading Level	Correct Factor	Measurement	Limit	Over	Antenna Height	Table Degree	
		MHz	dBuV	dB	dBuV/m	dB/m	dB	cm	degree	Comment
1	*	60.7044	40.38	-11.73	28.65	40.00	-11.35	peak		
2		65.1145	38.99	-12.49	26.50	40.00	-13.50	peak		
3		108.6470	37.68	-14.17	23.51	43.50	-19.99	peak		
4		247.6819	35.44	-11.57	23.87	46.00	-22.13	peak		
5		350.4768	38.65	-10.42	28.23	46.00	-17.77	peak		
6		836.2443	29.87	0.78	30.65	46.00	-15.35	peak		

APPENDIX III



**Photo 1 Test scene**



**PHOTO 01**

APPENDIX IV



PHOTO 01



PHOTO 02





PHOTO 03



PHOTO 04

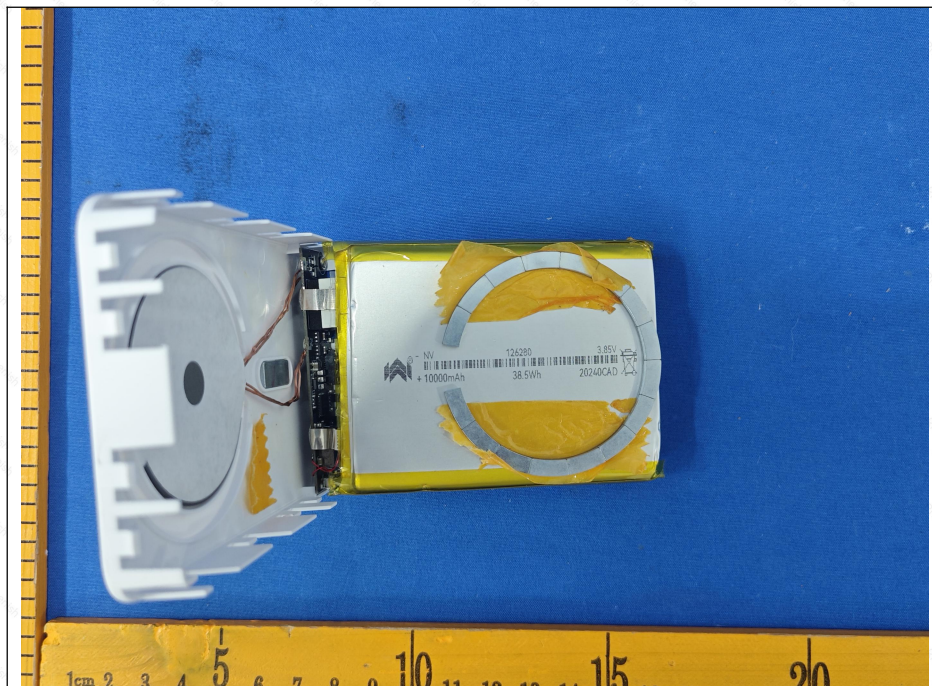


PHOTO 05

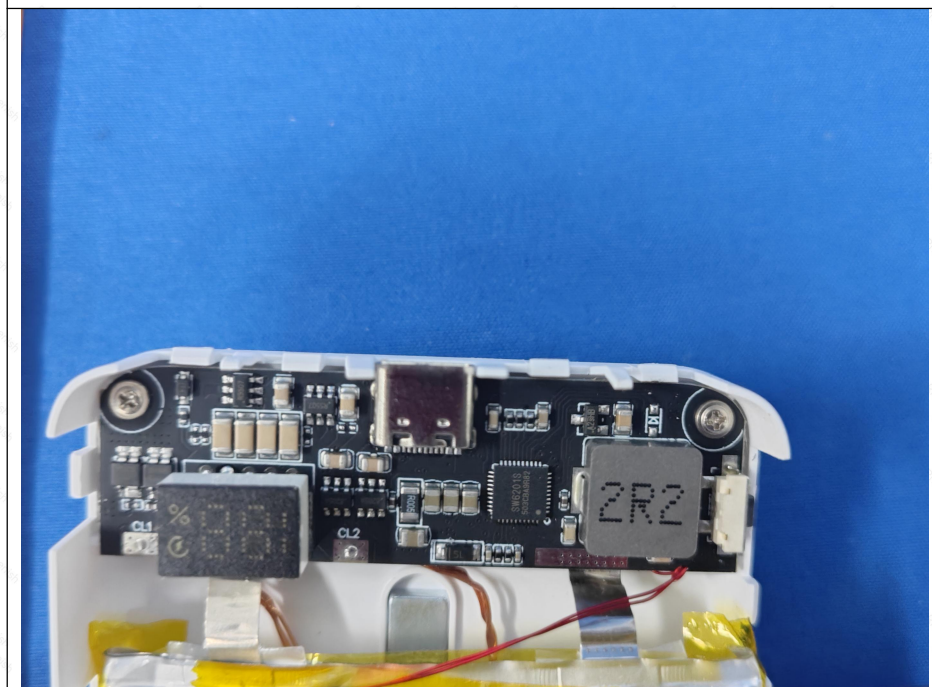


PHOTO 06





PHOTO 07



PHOTO 08

\*\*\*\*\*END\*\*\*\*\*